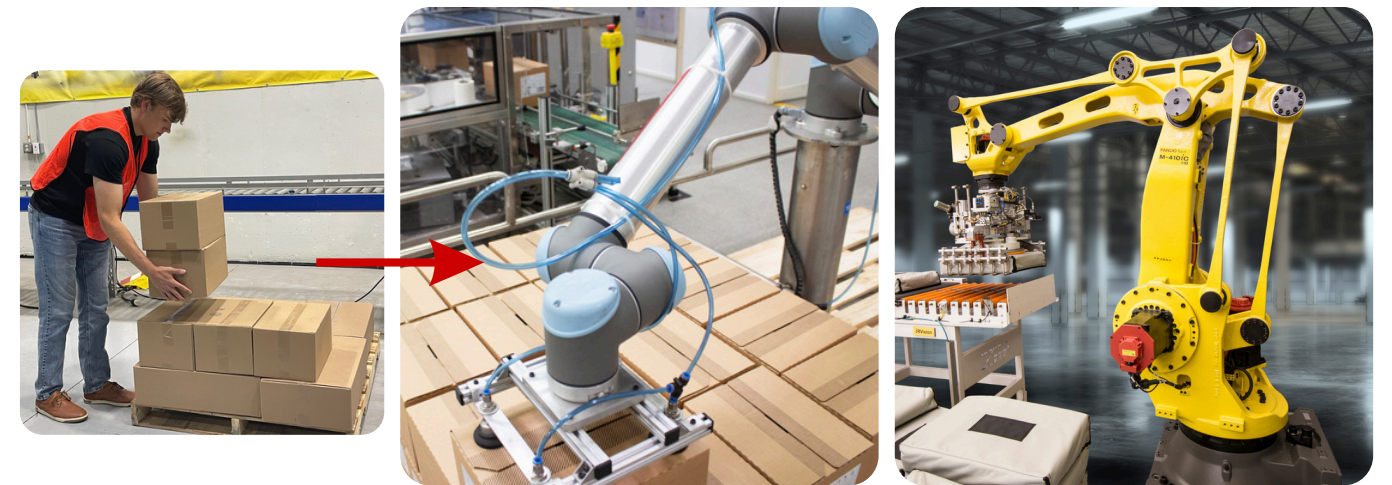
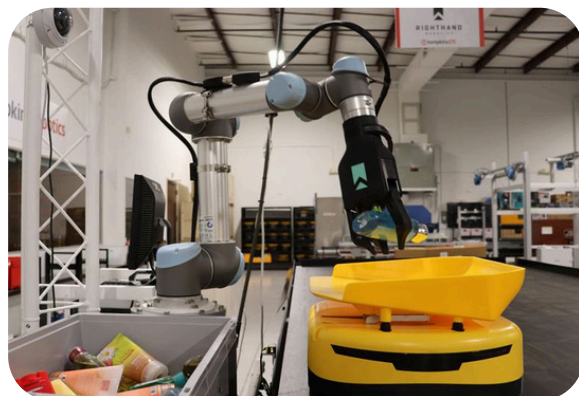


Automate a Variety of Material Handling Functions with Robots

- › **Pick** from bins, conveyors, trays, tables, machines, AGVs, AMRs and more
- › **Place** in/on conveyors, bins, shipping boxes, fixtures, machines & more
- › **Palletize** cases, bags, totes, cages, bins, baskets, pallets up to 1,500 lbs.
- › **Depalletize** using vision for any size/arrangement of cases, entire layers via conveyor, and integrate scanners and inventory mgt. equipment
- › **Carton erecting** with collaborative erectors or hard automation
- › **Machine tending** can pick or place material to machinery, or place finished goods into storage, conveyance and quality control equipment
- › **Print & apply** can place shipping or inventory labels on boxes or wrapped pallets where traditional machines won't work

Serving Many Industry Applications

- › eCommerce
- › Food & Beverage
- › Retail & Apparel
- › Pharmaceuticals & Life Sciences
- › Raw material manufacturing
- › Assembly manufacturing



Harness the Power of Industrial Automation with Robotic Solutions

Automation is no longer an option but a necessity for businesses to stay ahead in this highly competitive landscape. The constant productivity, advanced functionality, lower costs and increased employee retention make automation an attractive alternative to traditional manual labor.

Today's robotic systems enable manufacturers to respond and adapt quickly to changes in the market, work with existing production processes, fit into small footprints, and easily integrate into operations.

For over 100 years, Abel Womack has helped businesses improve their processes, reduce overhead costs, and operate with greater efficiency by delivering complete turnkey solutions and support. From concept and design to building and testing through installation, training and post-implementation support, we can automate high-precision, labor-intensive tasks at an affordable price. With our experienced team by your side, transform your operations today with optimized intralogistics solutions. Better yet, leasing a system provides the opportunity to be cash flow positive on day one.

800.554.2887
www.abelwomack.com

ABEL WOMACK

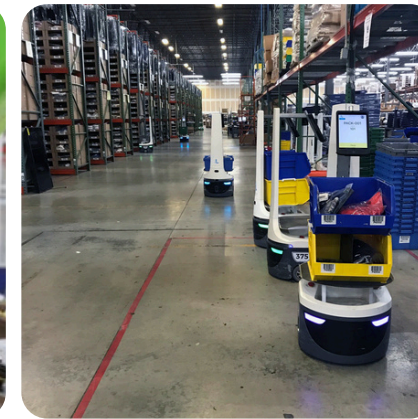
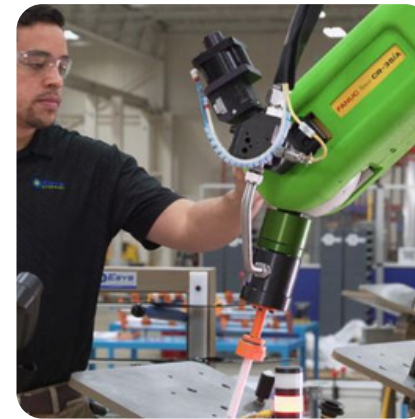
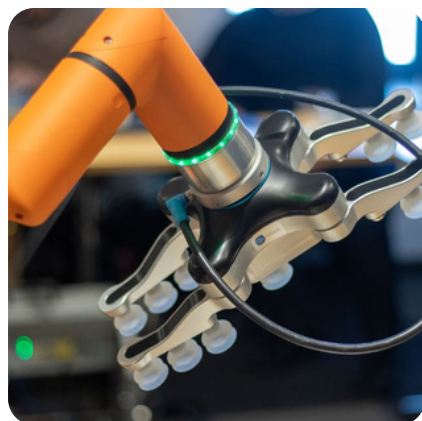
FANUC America The Leading Supplier of Industrial Robots

As an authorized systems integrator for FANUC America, Abel Womack works to develop and install turnkey robotic solutions that create a more efficient, productive, and cost-effective way to automate processes for our manufacturing and distribution clients.

Fanuc's line of palletizing, and high-speed, high-payload 6-Axis robots are designed for:

- › Speed & efficiency
- › High payload capacity
- › Precision & repeatability
- › Durability & robustness
- › Complex automation
- › Longer operating hours
- › High throughput
- › Specialized applications
- › Integration with complex systems
- › Reduced human error
- › Scalability for large operations
- › Cost efficiency in high-volume production

End of arm tooling allows for increased precision and efficiency in production, such as vacuum and mechanical grippers, and specialty tooling.



Cobots & Robots As a Service

Finding and retaining skilled labor is one of the biggest challenges many businesses face. Employee turnover and increasing wages make it difficult to keep up with demand and control costs.

By leveraging flexible collaborative robots and end of arm tooling, Abel Womack is helping automate turnkey palletizing and precision processes, resulting in increased productivity and quality.

Compared to traditional robotic automation, cobots provide all the benefits but with a shorter set-up time and easier programming at a very affordable cost. So, whether you're in need of high payload, long reach or precision tasks, we have a model to meet your needs.

Benefits of working with collaborative robots include:

- › Safety
- › Ease of use
- › Flexibility
- › Versatility
- › Cost-effective
- › Scalability
- › Space efficiency
- › Quick deployment
- › Enhanced productivity
- › Improved human-robot interaction
- › Worker satisfaction and retention

ABEL  WOMACK